



## Product Specification Sheet

### BuzziShroom EU

— By Cory Grosser

#### **An acoustic floor lamp**

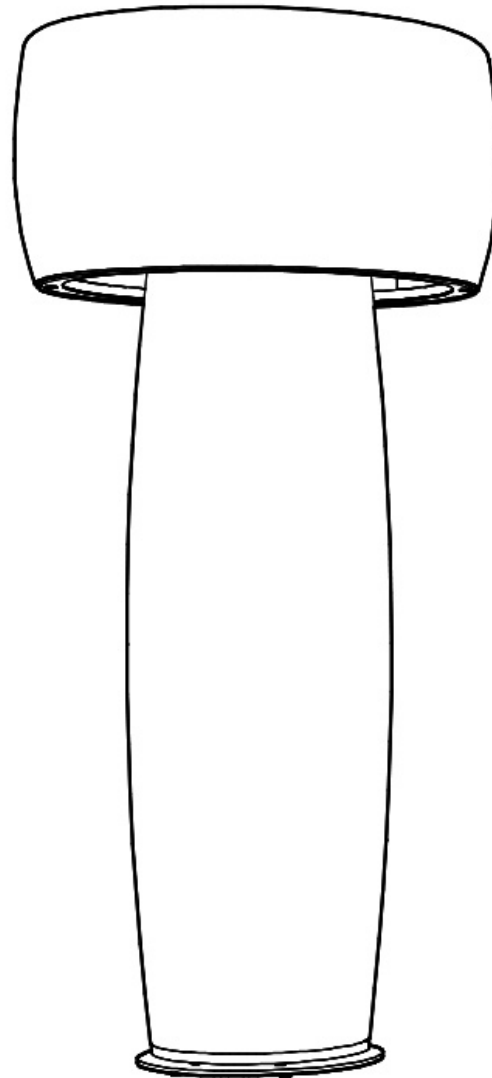
BuzziShroom is the first fully upholstered acoustic floor lamp made from 100% highly absorbent foam to suit many interiors while absorbing excess noise. The ground-breaking acoustic floor lamp produces a soft ambient light to suit various interiors. Opt for a monotoned look or choose different colors for the shade and base.



# The Family

**Model**

**BuzziShroom**



**Lighting Unit**

**Retrofit E27**  
(bulb excluded)

---

Required order information

1. Fabric (CAT -> Collection -> Color)
2. Plug Type

# Lighting Data

---

## Lighting Unit

### Retrofit Lighting unit



6x Retrofit E27 bulb excluded,  
Max 11W SBLED per fitting.

### BuzziShroom

#### Lighting Options

Lighting Unit	Voltage Input
---------------	---------------

Retrofit	220 - 240V
----------	------------

#### Characteristics

##### Technical

Wattage: 6 x Max. 11W SBLED

##### Visual

Color:  
Power Cable: Black  
Metal Frame: White  
Baseplate: Black



# Product Data

---

## Acoustic Shade



The acoustic panel is upholstered in a chosen fabric.



Absorption



Diffusion



Low tone



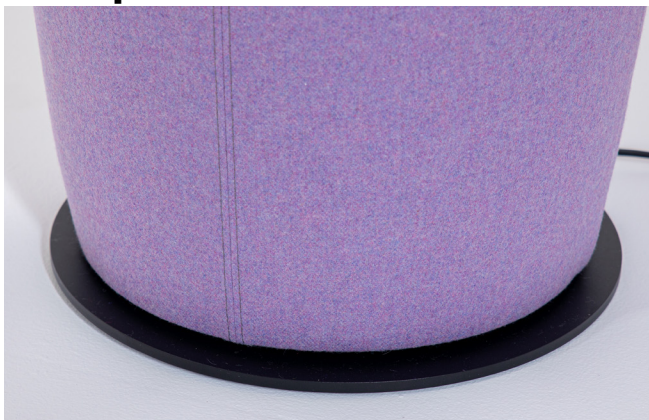
Mid tone



High tone

---

## Baseplate and Power Cord



The metal baseplate of the BuzziShroom is available in black (RAL 9005).

The power cord has a length of 300 cm and is finished with a plug and a black dimmer.

---

## Bicolor



Different color top & base in same category, same collection.

---

## Top cap



Top Cap in Black RAL 9005

---

## Dimming



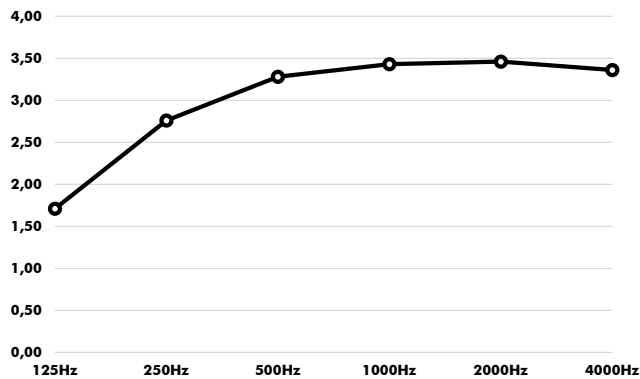
You can choose a more energised or intimate atmosphere by dimming the light.

---

## Acoustics

### BuzziShroom

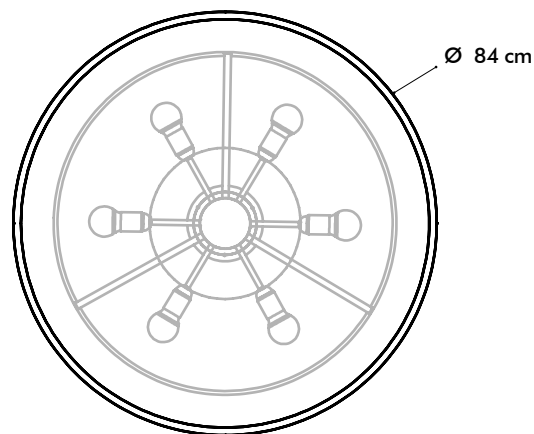
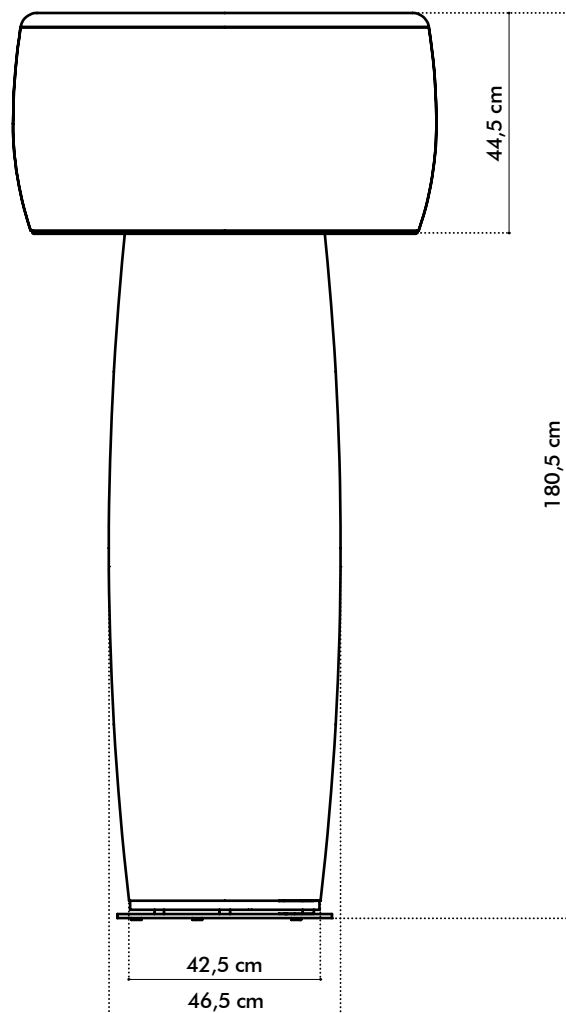
Equivalent sound absorption area in m<sup>2</sup> per object



Hz	Shroom Aeq/m <sup>2</sup>
125	1.71
250	2.76
500	3.28
1000	3.43
2000	3.46
4000	3.36

# Dimensions

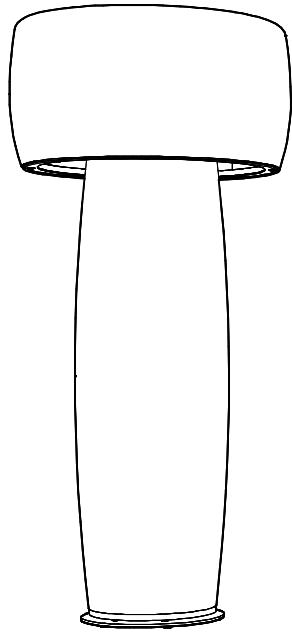
## BuzziShroom



---

# Weights

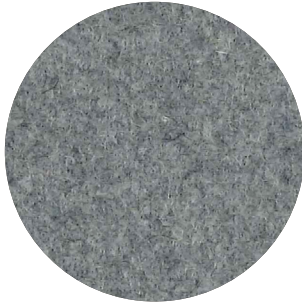
## BuzziShroom



29 kg

# Fabrics

## Fabric (45 colors)



**Category** A

**Composition** 70% Recycled Wool, 25% Recycled Polyacryl,  
5% Recycled Other Fabrics

**Weight** 405 g/m<sup>2</sup> | 11.94 oz/yd<sup>2</sup>

**Abrasion resistance** 40.000 Martindale, 50,000 Wyzenbeek

**Flammability** EU: EN 1021.1/2006 | BS EN 1021.1/2006 (cigarette).  
EN 1021.2/2006 | BS EN 1021.2/2006 (match)  
USA: CAL TB 117 | ASTM E84 CLASS A

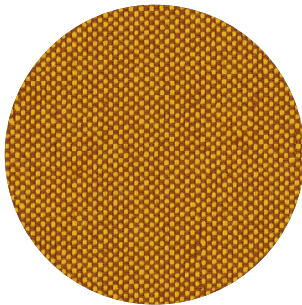
**Fastness to light** EU: 4 | USA 4

**Fastness to rubbing** EU: Wet 3-4 | Dry 4-5

**Fastness to crocking** USA: Wet 5 | Dry 5



## Trevira CS+ | CS (47 colors)



**Category** A

**Weight** 420 g/m<sup>2</sup> | 12.39 oz/yd<sup>2</sup>

**Composition** 100% Polyester, Trevira CS

**Abrasion resistance** 100.000 Martindale, 90,000 Wyzenbeek

**Flammability** BS 5852 part II: CRIB 5 | BS 7176 Medium Hazard  
USA: CAL TB 117 | M1 | B1 | EN 1021/1-2 | C1 |  
IMO Res. A652 (16)

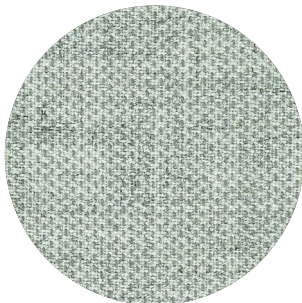
**Fastness to light** EU: 6 | USA 5

**Fastness to rubbing** EU: Wet 4-5 | Dry 4-5

**Fastness to crocking** USA: Wet 5 | Dry 5



## Clara 2 (24 colors)



**Category** B

**Composition** 92% new wool, 8% nylon

**Weight** 400 g/lin.m

**Abrasion resistance** 80.000 Martindale rubs, EN ISO 12947

**Flammability** EN 1021-1/2 | BS 5852, ignition source 2-3 | DIN 4102 B2  
NF D 60 013 | UNI 9175 11M | US Cal. Tech. Bull. 117, Sec. E  
NFPA 260 | IMO A.652(16)

**Fastness to light** Note 5-7, ISO 105-B02

**Fastness to rubbing** (ISO) dry 4-5, wet 4

**Pilling** Note 4, EN ISO 12945



kvadrat



## Remix 3 (73 colors)

kvadrat



**Category B**

**Composition** 90% new wool, 10% nylon

**Weight** 415 g/lin.m

**Abrasion resistance** 100.000 Martindale rubs, EN ISO 12947

**Flammability** EN 1021-1/2 | BS 5852 part 1

Önorm B1/Q1 | NF D 60 013 | UNI 9175, 1IM

AS/NZS 1530.3 | Cal. Tech. Bull. 117-2013

NFPA 260 | IMO FTP Code 2010:Part 8

**Fastness to light** Note 5-7, ISO 105-B02

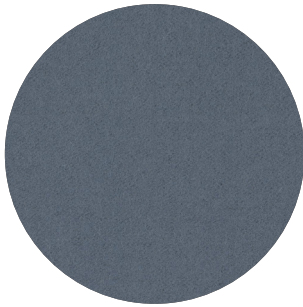
**Fastness to rubbing** (ISO) dry 4-5, wet 4

**Pilling** Note 4, EN ISO 12945



## Hero 2 (33 colors)

kvadrat



**Category C**

**Composition** 96% new wool, 4% nylon

**Weight** 580 g/lin.m

**Abrasion resistance** 45.000 Martindale rubs, EN ISO 12947

**Flammability** EN 1021-1/2 | DIN 4102 B2 | NF D 60 013

UNI 9175 1IM | US Cal. Bull. 117-2013 | NFPA 260

IMO A.652 (16)

**Fastness to light** Note 5-6, ISO 105-B02

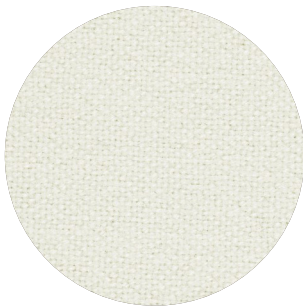
**Fastness to rubbing** (ISO) dry 4-5, wet 4-5

**Pilling** Note 3-4, EN ISO 12945



## Tonus 4 (47 colors)

kvadrat



**Category D**

**Composition** 90% new wool, 10% Helanca

**Weight** 665 g/lin.m

**Abrasion resistance** 100.000 Martindale rubs, EN ISO 12947

**Flammability** EN 1021-1/2 | BS 5852 part 1 | DIN 4102 B2

Önorm B1/Q1 | NF D 60 013 | UNI 9175 1IM

US Cal. Bull. 117-2013 | NFPA 260 | IMO A.652 (16)

**Fastness to light** Note 5-7, ISO 105-B02

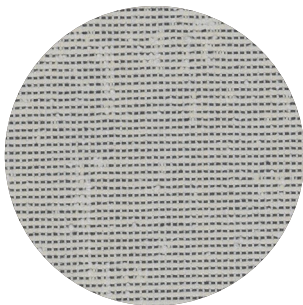
**Fastness to rubbing** (ISO) dry 3-5, wet 3-5

**Pilling** Note 3, EN ISO 12945



## Memory 2 (20 colors)

kvadrat



**Category E**

**Composition** 100% Trevira CS

**Weight** 700 g/lin.m

**Abrasion resistance**

35.000 rubs acc. to the Martindale method, EN ISO 12947

**Flammability** EN 1021-1/2 | DIN 4102 B1 | Önorm B1/Q1

NF D 60 013 | NF P 92 507 M1 | UNI 9175 1IM

UNI 9177 classe 1 | US Cal. Tech. Bull. 117

IMO A.652 (16)

**Fastness to light** Note 5-8, ISO 105-B02

**Fastness to rubbing** (ISO) dry 4-5, wet 4-5

**Pilling** Note 4, EN ISO 12945

